

LED for Bar Graphic Display

Absolute Maximum Ratings (Figures shown below are values per segment.)

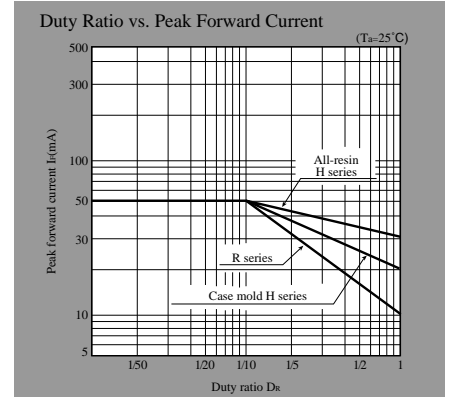
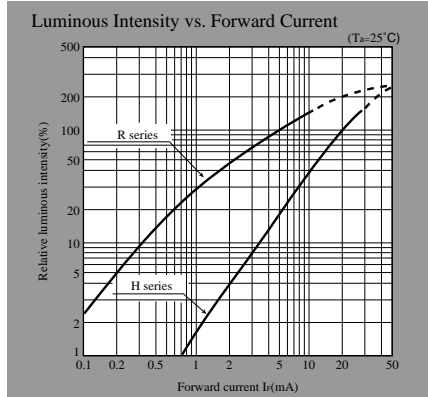
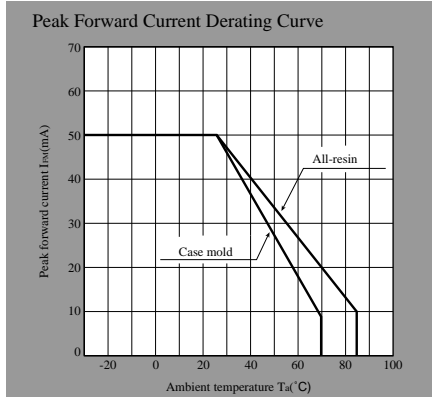
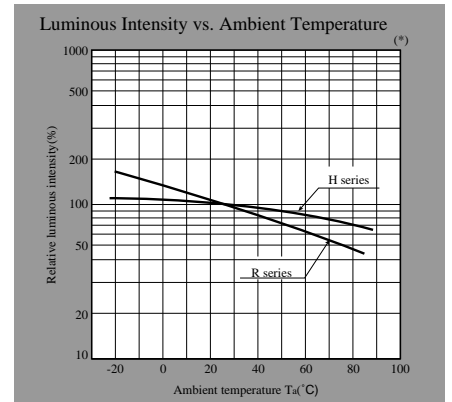
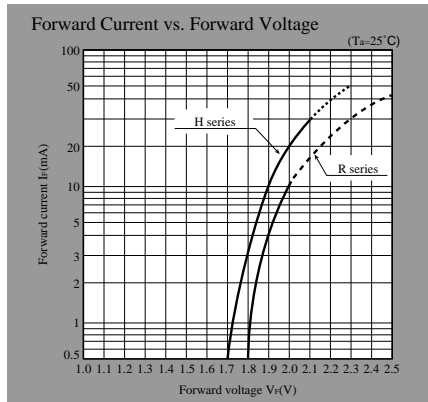
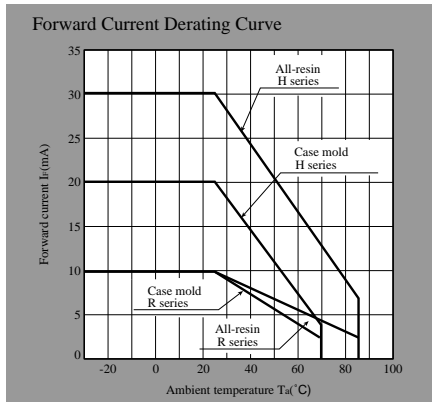
Type	Series	Radiation color	Power dissipation P (mW)	Forward current I _F (mA)	Peak forward current ^{*1} I _{FM} (mA)	Derating factor (mA/°C)		Reverse voltage V _R (V)	Operating temperature T _{opr.} (°C)	Storage temperature T _{stg.} (°C)
						DC	Pulse			
Case mold	R	Red	25	10	50	0.18	0.91	5	-20 to +70	-30 to +80
	H	Yellow	50	20	50	0.36	0.91	5	-20 to +70	-30 to +80
	M	Yellow-green	38	15	50	0.27	0.91	5	-20 to +70	-30 to +80
Red		25	10	50	0.18	0.91				
All resin	R	Red	23	10	50	0.13	0.67	5	-25 to +85	-25 to +100
	H	Yellow	84	30	50	0.40	0.67	5	-25 to +85	-25 to +100
	M	Yellow-green	84	30	50	0.40	0.67	5	-25 to +85	-25 to +100
Red		23	10	50	0.13	0.67				

*1 Duty ratio=1/10, Pulse width=0.1ms

Electro-optical Characteristics (Figures shown below are values per segment.)

Type	Series	Radiation color	Forward voltage V _F (V)		Luminous intensity I _v (mcd)		Peak emission wavelength λ _p (nm)	Spectrum radiation bandwidth Δλ(nm)		Reverse current	
			TYP.	MAX.	MIN.	TYP.		TYP.	I _F (mA)	I _R (μA) MAX.	V _R (V)
Case mold	R	Red	1.9	2.5	0.15	0.3	695	100	5	10	4
	H	Yellow	1.9	2.5	0.2	0.5	585	30	10	10	4
	M	Yellow-green	2.0	2.5	0.2	0.5	565	30	10	10	4
Red		1.9	2.5	0.15	0.3	695	100	5	10	4	
All resin	R	Red	1.9	2.3	0.3	0.9	695	100	5	10	4
	H	Yellow	2.0	2.8	1.5	5.0	585	30	20	10	4
	M	Yellow-green	2.1	2.8	0.6	1.4	565	30	20	10	4
Red		1.9	2.3	0.3	0.9	695	100	5	10	4	

Characteristics Diagrams



* As for current conditions, refer to I_F in electro-optical characteristics

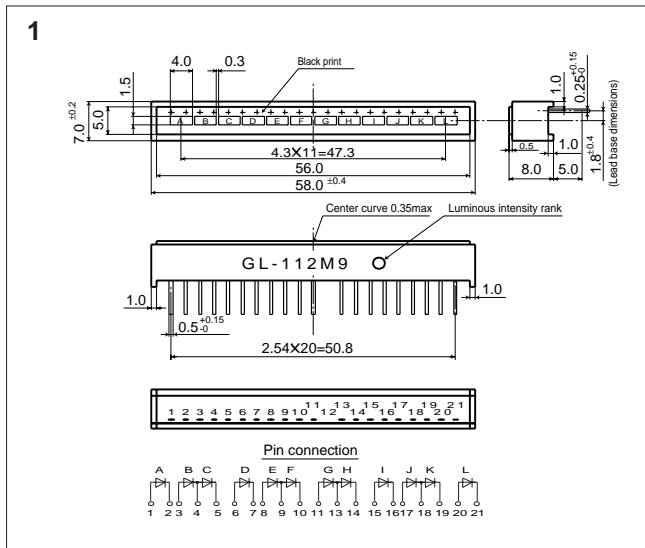
LED Driver IC for Bar Graphic Display

■ Driver IC

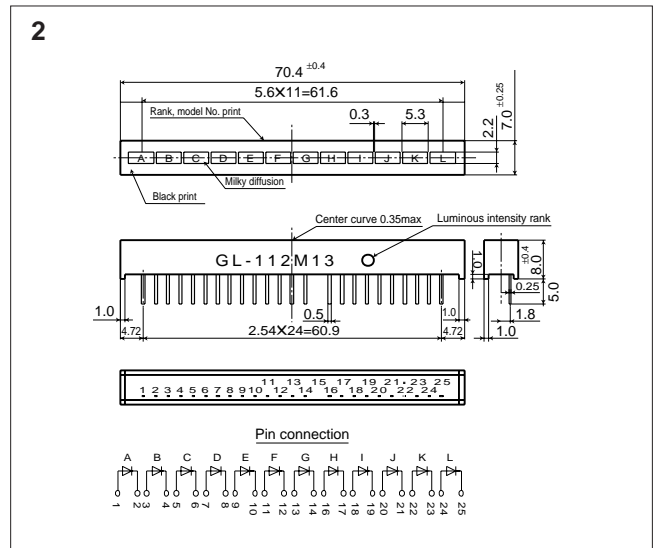
Number of dots	LED for bar graphic display	Display		Model No.	Scale (dB)	DC input	AC input	Peak hold	Fixed gain	Luminosity adjustment	Signal detection	Low noise	Switch for bar/dot	Battery operation	Deflection	Package															
		Dot configuration	CH																												
12	GL112R9 series GL112R13 series	12	1	IR2E16	VU	-20 to +6	1			●		●				22DIP															
				IR2432																											
				IR2E30																											
				IR2E41																											
				IR2E05	Linear	12 steps	1					●																			
				IR2E10																											
				IR2406																											
				IR2406G																											
				IR2433	Logarithm	-44 to 0	1					●																			
				IR2431																											
				IR2E44																											
				IR2E20													VU	-20 to +8	2												
IR2E43																															
5+7	1	IR2E38	VU	-20 to +8	1	2	●									16DIP															
7	GL107R8 series GL107R12 series	7	1	IR2E19N	VU	-20 to +6	1			●	●	●				16DIP															
				IR2E28																											
				2	IR2E09	Linear	7 steps	2										22DIP													
				3+4	1	IR2E02	VU	-20 to +6	1					●						16DIP											
						IR2E29	Logarithm	-42 to 0	1					●	●																
5	GL105R8 series GL105R11 series	5	1	IR2E13	VU	-10 to +6	1	1					●			9SIP															
				IR2E31/A																											
				IR2E32N9																											
				IR2E27A																											
				2													1	IR2E01			1					●					14SOP
																		IR2E24			2										

* There are no specific driver ICs for 6 dots, 4 dots, 3 dots. Please select alternative driver ICs of 7 dots, 5 dots, 5 dots.

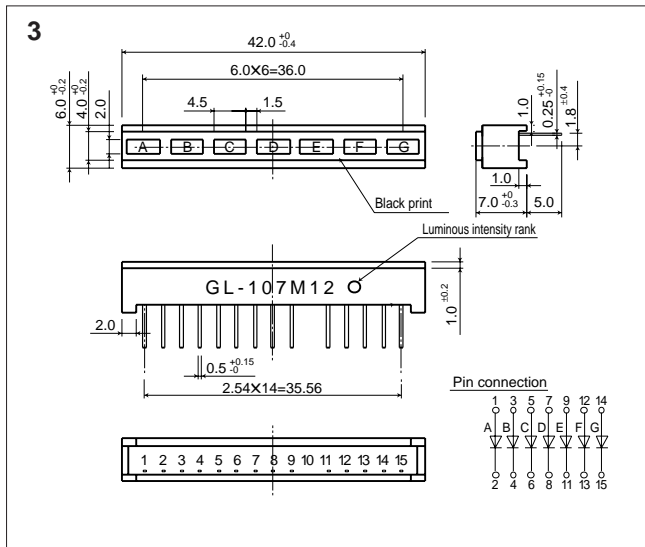
LED for Bar Graphic Display Outline Dimensions(Unit:mm)



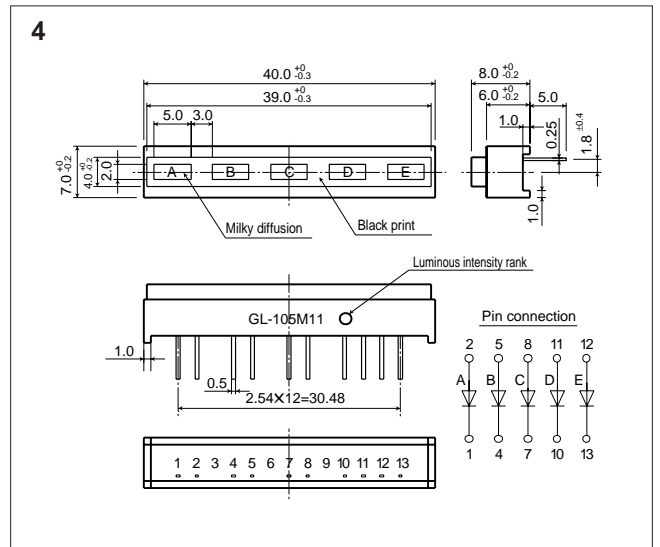
GL112□9 Series



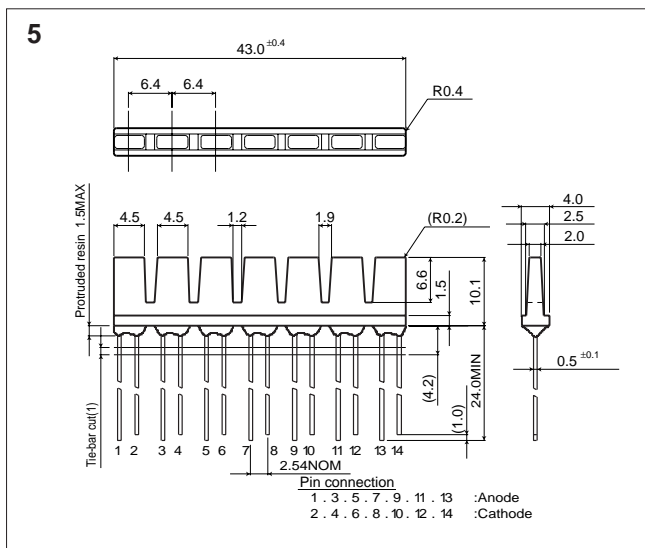
GL112□13 Series



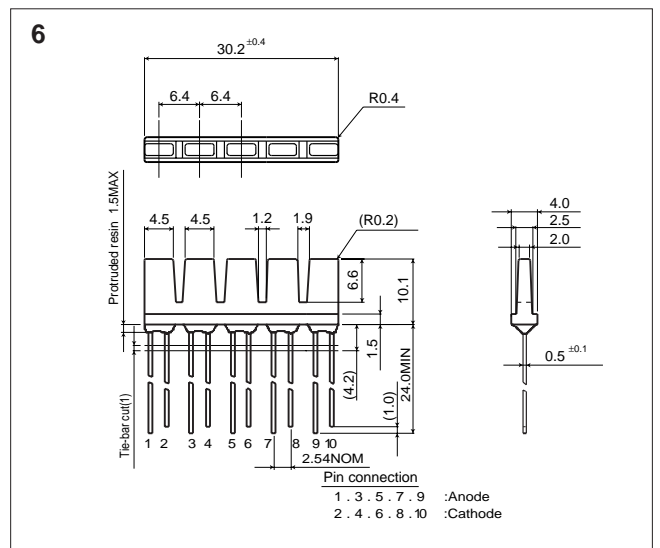
GL107□12 Series



GL105□11 Series



GL107□8 Series



GL105□8 Series

(Notice) • In the absence of confirmation by device specification sheets, SHARP takes no responsibility for any defects that may occur in equipment using any SHARP devices shown in catalogs, data books, etc. Contact SHARP in order to obtain the latest device specification sheets before using any SHARP device.
(Internet) • Data for sharp's optoelectronic/power device is provided for internet.(Address <http://www.sharp.co.jp/ecg/>)